

COMMUNITY FOUNDATION OF GREATER DES MOINES INDEXED GROWTH



Asset Allocation & Performance

As of May 31, 2024

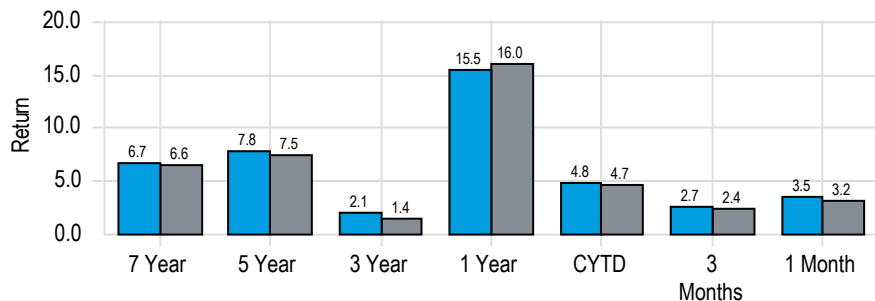
Asset Allocation on May 31, 2024

	Actual \$	Actual (%)	Target (%)
Equity	\$64,825,172	65.8	65.0
Fixed Income	\$27,507,678	27.9	30.0
Real Assets	\$4,085,708	4.1	5.0
Cash	\$2,167,814	2.2	0.0
Total	\$98,586,372	100.0	100.0

Summary of Cash Flows

	1 Month	CYTD
Beginning Market Value	\$93,113,036	\$91,986,426
Net Contributions	\$2,165,000	\$2,132,144
Gain/Loss	\$3,308,336	\$4,467,802
Ending Market Value	\$98,586,372	\$98,586,372

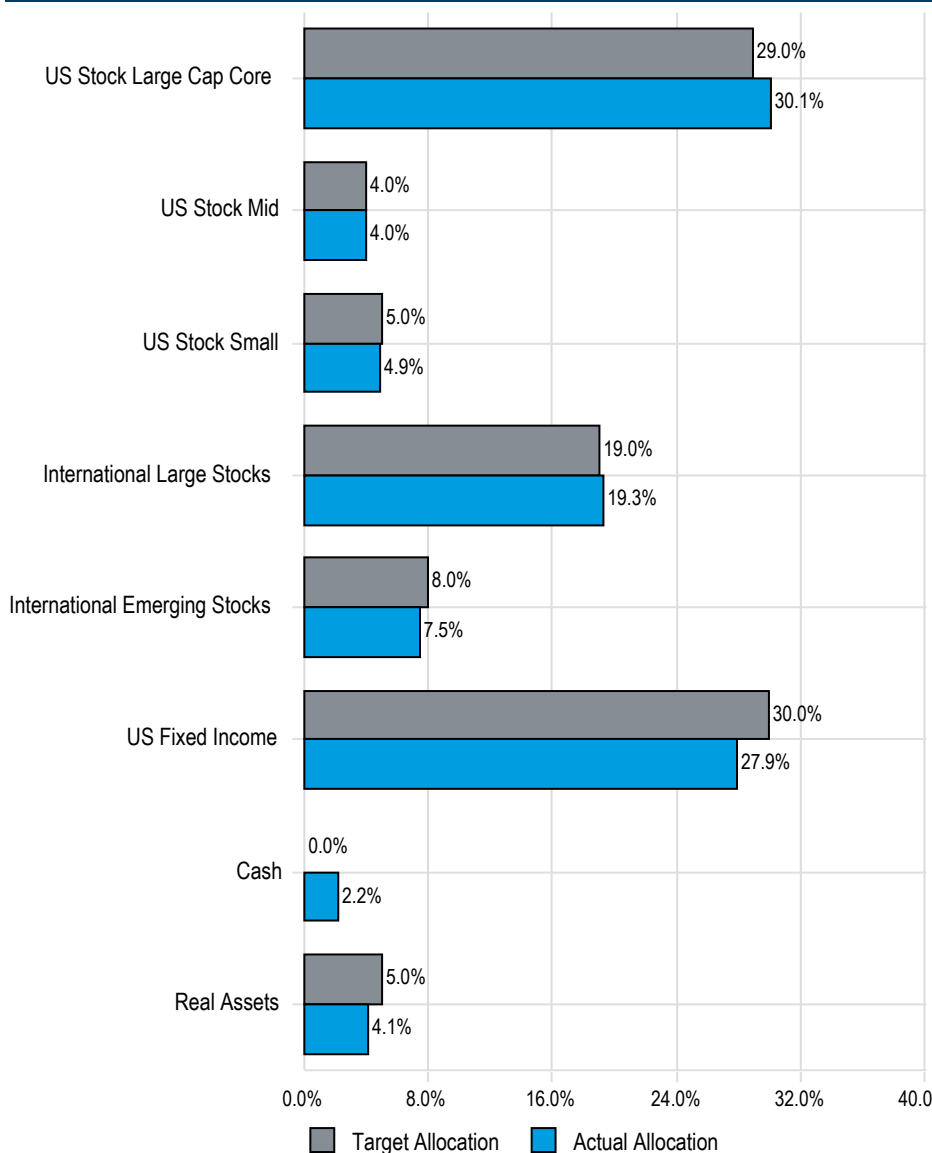
Return Summary



Indexed Growth Portfolio

70% MSCI ACWI IMI (net)/30% BBgBarc Global Agg Index

Target Allocation vs. Actual Allocation (%)



Target Allocation

Actual Allocation

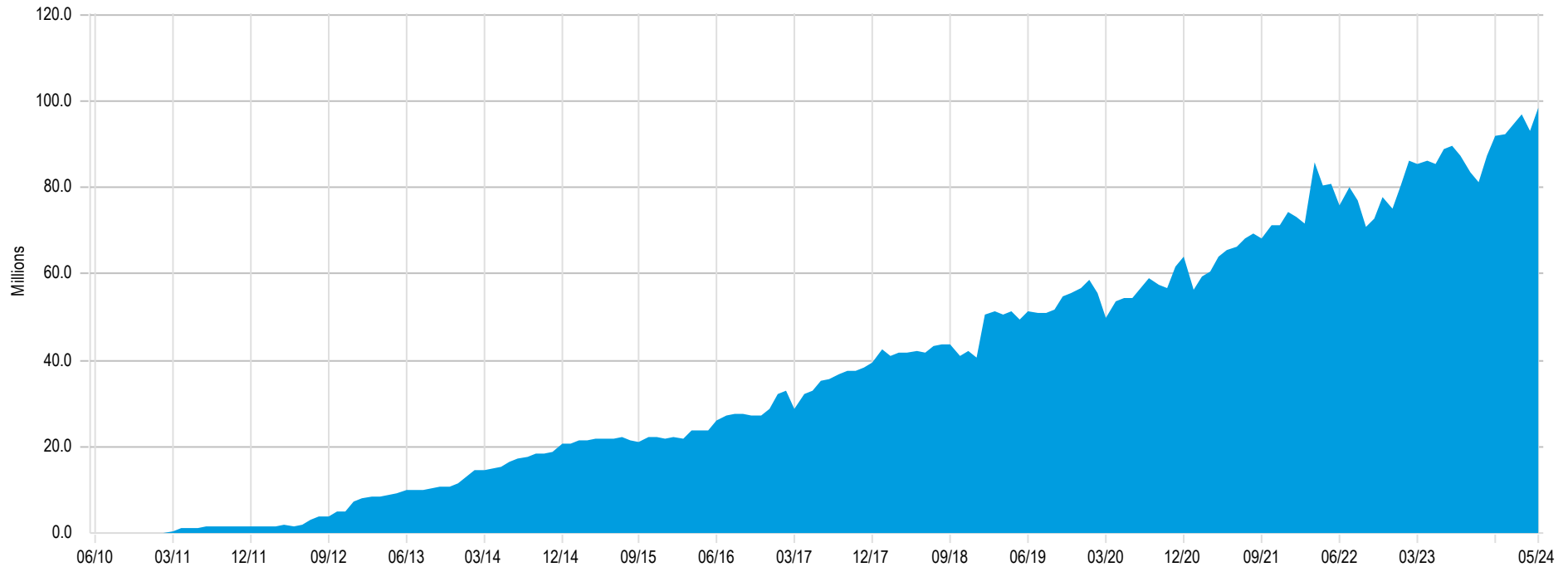
COMMUNITY FOUNDATION OF GREATER DES MOINES INDEXED GROWTH



Market Value History

As of May 31, 2024

Market Value History - Since Inception



Summary of Cash Flows

	1 Month	3 Months	CYTD	1 Year	3 Year	5 Year	7 Year	Inception 6/30/10
Beginning Market Value	\$93,113,036	\$94,568,076	\$91,986,426	\$85,643,404	\$65,613,535	\$49,322,698	\$32,933,309	-
Net Contributions	\$2,165,000	\$1,484,500	\$2,132,144	-\$142,869	\$26,960,642	\$25,203,468	\$38,322,456	\$65,933,587
Gain/Loss	\$3,308,336	\$2,533,796	\$4,467,802	\$13,085,837	\$6,012,195	\$24,060,206	\$27,330,607	\$32,652,785
Ending Market Value	\$98,586,372	\$98,586,372	\$98,586,372	\$98,586,372	\$98,586,372	\$98,586,372	\$98,586,372	\$98,586,372

COMMUNITY FOUNDATION OF GREATER DES MOINES INDEXED GROWTH

Asset Allocation & Performance (net of fees)

As of May 31, 2024



	Allocation		Inception Date	Performance								
	Asset \$	% of Portfolio		Inception	10 Year	7 Year	5 Year	3 Year	1 Year	CYTD	3 Months	1 Month
INDEXED GROWTH PORTFOLIO	98,586,372	100.0	Jul-2010	7.2	5.9	6.7	7.8	2.1	15.5	4.8	2.7	3.5
<i>Indexed Growth Portfolio SAA</i>				-	5.4	6.2	6.9	1.0	15.2	4.1	2.2	3.2
<i>70% MSCI ACWI IMI (net)/30% BBgBarc Global Agg Index</i>				7.4	5.7	6.6	7.5	1.4	16.0	4.7	2.4	3.2
TOTAL EQUITY	64,825,172	65.8	Jun-2011	8.3	8.1	9.3	11.2	4.5	22.6	8.2	4.0	4.3
<i>MSCI AC World IMI Index (Net)</i>				8.4	8.2	9.4	11.3	4.5	23.0	8.3	3.7	4.1
TOTAL DOMESTIC EQUITY	38,422,975	39.0	Jun-2011	12.5	11.8	12.8	14.7	7.9	26.8	9.8	3.4	4.6
<i>Dow Jones U.S. Total Stock Market Index</i>				12.6	12.0	13.1	14.9	7.7	27.7	10.2	3.4	4.7
Vanguard Institutional Index I	29,711,157	30.1	Dec-2016	14.3	-	13.8	15.8	9.5	28.1	11.3	3.9	5.0
<i>S&P 500 Index</i>				14.4	-	13.8	15.8	9.6	28.2	11.3	3.9	5.0
Vanguard Mid Cap Index Admiral	3,895,502	4.0	Jun-2014	9.5	9.5	9.7	11.0	3.0	22.0	5.6	2.0	2.7
<i>CRSP U.S. Mid Cap TR Index</i>				9.5	9.5	9.8	11.0	3.1	22.0	5.5	2.0	2.7
Vanguard Small Cap Index Adm	4,816,316	4.9	Jul-2019	8.9	-	-	-	1.4	22.9	4.5	1.4	4.0
<i>Vanguard Spliced Small Cap Index (Net)</i>				8.8	-	-	-	1.4	22.8	4.5	1.4	4.0
TOTAL INTERNATIONAL EQUITY	26,402,197	26.8	Jun-2011	4.1	4.1	5.1	6.9	0.1	16.8	6.0	4.9	3.9
<i>MSCI AC World ex USA IMI (Net)</i>				4.3	4.1	5.2	6.9	0.1	16.7	5.5	4.3	2.9
Vanguard Developed Markets Index	19,042,990	19.3	Jul-2010	7.2	4.8	6.1	8.2	2.1	17.8	6.4	4.8	4.7
<i>Vanguard Spliced Developed ex U.S. Index (Net)</i>				7.1	4.8	5.9	8.0	1.9	17.6	5.8	4.4	3.6
Vanguard FTSE Emerging Markets ETF Index	4,585,564	4.7	Jul-2010	3.7	3.1	3.9	4.5	-3.9	14.2	5.0	4.6	1.9
<i>Vanguard Spliced Emerging Markets Index (Net)</i>				3.7	3.2	4.0	4.6	-4.1	14.6	4.7	4.3	1.0
Vanguard Emerging Mkts Stock Idx Adm	2,773,643	2.8	May-2017	3.9	-	3.8	4.4	-4.0	14.1	5.0	4.6	1.9
<i>Vanguard Spliced Emerging Markets Index (Net)</i>				4.1	-	4.0	4.6	-4.1	14.6	4.7	4.3	1.0
TOTAL FIXED INCOME	27,507,678	27.9	Jun-2011	1.7	1.1	1.0	0.3	-2.5	2.3	-1.1	0.2	1.7
<i>Blmbg. Global Aggregate Index</i>				0.3	-0.4	-0.5	-1.6	-5.8	0.8	-3.3	-0.7	1.3
Vanguard Total Bond Index	23,690,271	24.0	Jul-2010	1.9	1.3	0.7	-0.1	-3.0	1.4	-1.5	0.1	1.7
<i>Blmbg. U.S. Aggregate Index</i>				2.0	1.3	0.7	-0.2	-3.1	1.3	-1.6	0.0	1.7
PIMCO Income Fund Institutional Class	3,817,407	3.9	Jun-2020	3.5	-	-	-	1.1	7.9	1.4	1.3	1.8
<i>Blmbg. U.S. Aggregate Index</i>				-2.4	-	-	-	-3.1	1.3	-1.6	0.0	1.7

COMMUNITY FOUNDATION OF GREATER DES MOINES INDEXED GROWTH

Asset Allocation & Performance (net of fees)

As of May 31, 2024



	Allocation		Inception Date	Performance								
	Asset \$	% of Portfolio		Inception	10 Year	7 Year	5 Year	3 Year	1 Year	CYTD	3 Months	1 Month
TOTAL CASH	2,167,814	2.2	Jun-2011	0.7	0.9	1.2	1.1	1.5	2.6	1.2	0.7	0.3
Money Market Fund	2,167,814	2.2	Jun-2011	0.7	0.9	1.2	1.1	1.5	2.6	1.2	0.7	0.3
<i>90 Day U.S. Treasury Bill Index</i>				1.1	1.5	2.0	2.1	2.9	5.5	2.2	1.4	0.5
TOTAL REAL ASSETS	4,085,708	4.1	Sep-2014	2.1	-	1.6	0.1	-3.5	7.3	-4.4	-0.2	3.8
<i>Dow Jones Global Select Real Estate Securities Ind Index</i>				1.8	-	1.2	-0.3	-3.9	6.9	-4.7	-0.4	3.5
SPDR Dow Jones Global Real Estate ETF	4,085,708	4.1	Sep-2014	2.1	-	1.6	0.1	-3.5	7.3	-4.4	-0.2	3.8
<i>Dow Jones Global Select Real Estate Securities Ind Index</i>				1.8	-	1.2	-0.3	-3.9	6.9	-4.7	-0.4	3.5

COMMUNITY FOUNDATION OF GREATER DES MOINES INDEXED GROWTH

Historical Hybrid Composition

As of May 31, 2024



	%
<i>May-2022</i>	
MSCI AC World IMI Index (Net)	65.0
Bimbg. Global Aggregate Index	30.0
Dow Jones Global Select Real Estate Securities Ind	5.0

OBJECTIVES :The current portfolio has a long-term (20-year) expected return of 6.6%. Over a 10-year horizon, the portfolio is expected to return 7.0%. The standard deviation of this portfolio is plus/minus 13.6% over any one year and plus/minus 4.2% over the 10-year period. The Sharpe Ratio of this portfolio is 0.24.

COMMUNITY FOUNDATION OF GREATER DES MOINES MODERATE GROWTH



Asset Allocation & Performance

As of May 31, 2024

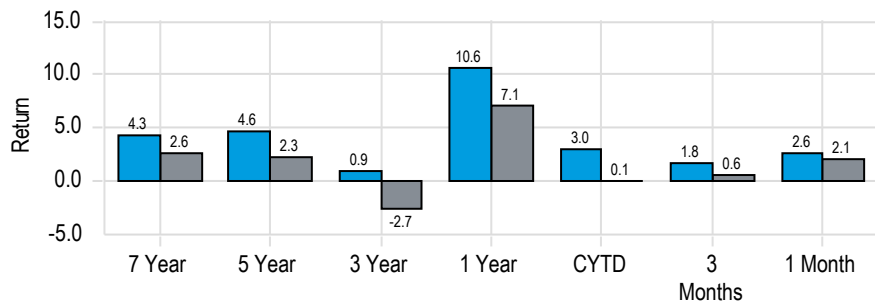
Asset Allocation on May 31, 2024

	Actual \$	Actual (%)	Target (%)
Equity	\$9,750,706	34.8	34.0
Fixed Income	\$18,230,837	65.1	66.0
Cash	\$2,586	0.0	0.0
Total	\$27,984,129	100.0	100.0

Summary of Cash Flows

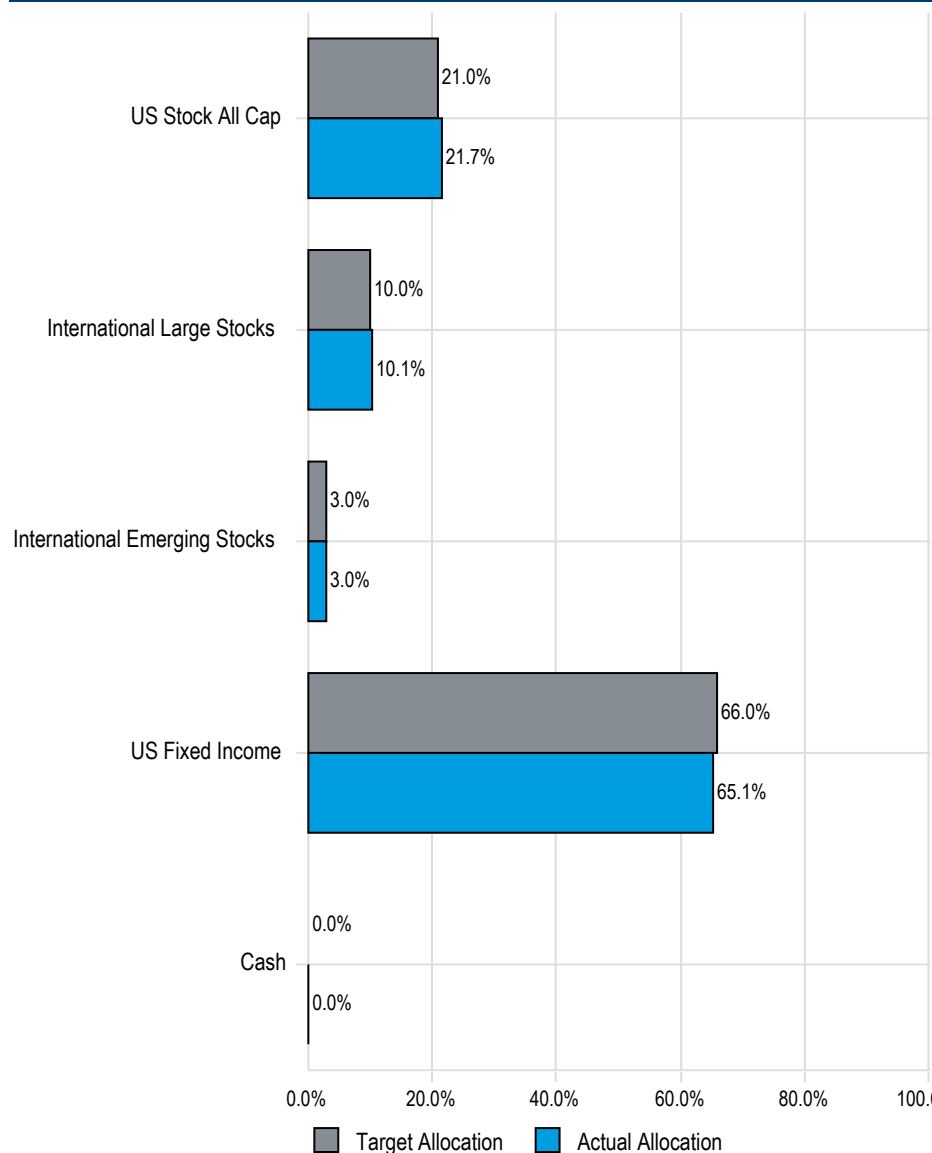
	1 Month	CYTD
Beginning Market Value	\$27,274,650	\$29,365,914
Net Contributions	-	-\$2,212,530
Gain/Loss	\$709,478	\$830,744
Ending Market Value	\$27,984,129	\$27,984,129

Return Summary



■ MODERATE GROWTH PORTFOLIO
■ 30% MSCI ACWI IMI (net)/70% BBgBarc Global Agg Index

Target Allocation vs. Actual Allocation (%)



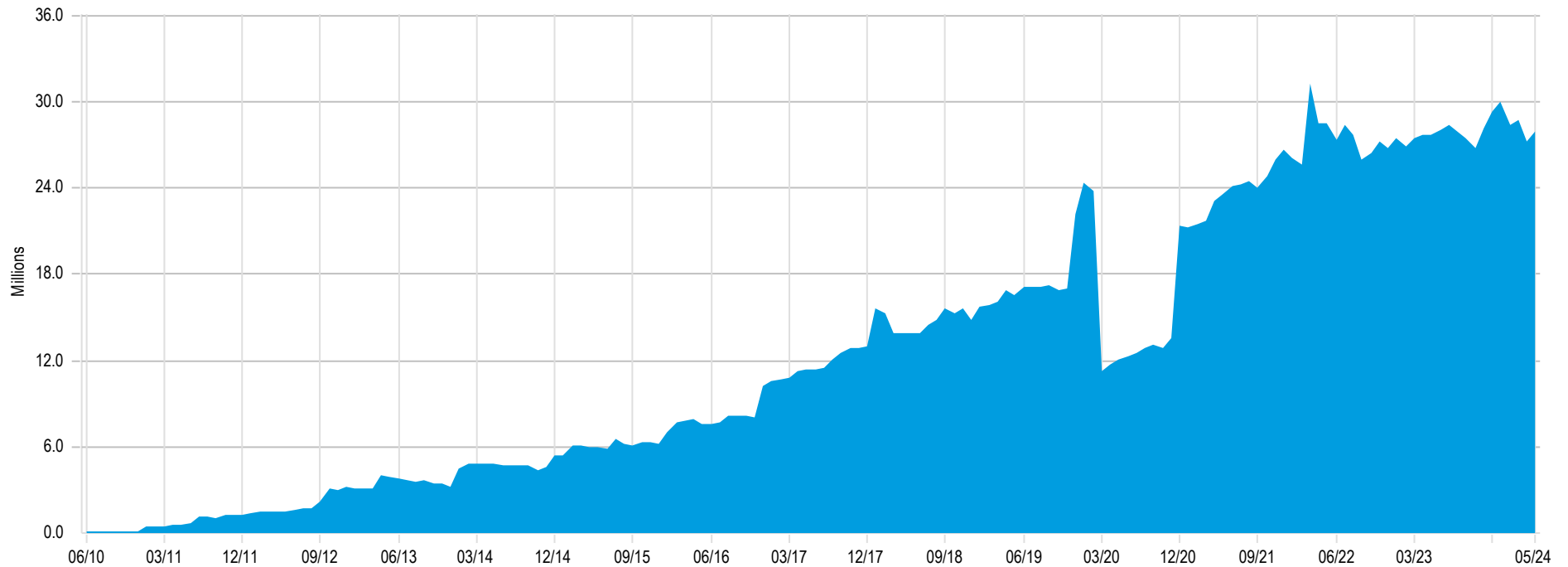
COMMUNITY FOUNDATION OF GREATER DES MOINES MODERATE GROWTH



Market Value History

As of May 31, 2024

Market Value History - Since Inception



Summary of Cash Flows

	1 Month	3 Months	CYTD	1 Year	3 Year	5 Year	7 Year	Inception 6/30/10
Beginning Market Value	\$27,274,650	\$28,412,628	\$29,365,914	\$27,773,269	\$23,615,597	\$16,539,762	\$11,405,337	-
Net Contributions	-	-\$908,778	-\$2,212,530	-\$2,650,446	\$3,690,760	\$8,200,562	\$12,428,773	\$22,588,912
Gain/Loss	\$709,478	\$480,278	\$830,744	\$2,861,306	\$677,772	\$3,243,805	\$4,150,019	\$5,395,217
Ending Market Value	\$27,984,129	\$27,984,129	\$27,984,129	\$27,984,129	\$27,984,129	\$27,984,129	\$27,984,129	\$27,984,129

COMMUNITY FOUNDATION OF GREATER DES MOINES MODERATE GROWTH

Asset Allocation & Performance (net of fees)

As of May 31, 2024



	Allocation			Performance								
	Asset \$	% of Portfolio	Inception Date	Inception	10 Year	7 Year	5 Year	3 Year	1 Year	CYTD	3 Months	1 Month
MODERATE GROWTH PORTFOLIO	27,984,129	100.0	Jul-2010	4.9	3.7	4.3	4.6	0.9	10.6	3.0	1.8	2.6
<i>Moderate Growth Portfolio SAA</i>				-	2.5	2.8	2.7	-2.3	8.0	0.5	0.8	2.2
<i>30% MSCI ACWI IMI (net)/70% BBgBarc Global Agg Index</i>				3.8	2.3	2.6	2.3	-2.7	7.1	0.1	0.6	2.1
TOTAL EQUITY	9,750,706	34.8	Jun-2011	9.0	8.6	9.7	11.8	4.9	23.7	8.7	3.8	4.5
<i>MSCI AC World IMI Index (Net)</i>				8.4	8.2	9.4	11.3	4.5	23.0	8.3	3.7	4.1
TOTAL DOMESTIC EQUITY	6,073,334	21.7	Jul-2010	14.2	12.0	13.1	14.9	7.7	27.6	10.1	3.3	4.7
<i>Dow Jones U.S. Total Stock Market Index</i>				14.2	12.0	13.1	14.9	7.7	27.7	10.2	3.4	4.7
Vanguard Total Stock Mkt Idx Adm	6,073,334	21.7	Jul-2010	14.2	12.0	13.1	14.9	7.7	27.6	10.1	3.3	4.7
<i>Vanguard Spliced Total Stock Market Index (Net)</i>				14.2	12.0	13.1	14.9	7.7	27.6	10.1	3.3	4.7
TOTAL INTERNATIONAL EQUITY	3,677,371	13.1	Jul-2010	7.0	4.5	5.5	7.4	0.6	17.0	6.2	4.8	4.1
<i>MSCI AC World ex USA IMI (Net)</i>				6.1	4.1	5.2	6.9	0.1	16.7	5.5	4.3	2.9
Vanguard Developed Markets Index Admiral	2,834,801	10.1	Jul-2010	7.2	4.8	6.0	8.2	2.1	17.8	6.5	4.8	4.8
<i>Vanguard Spliced Developed ex U.S. Index (Net)</i>				7.1	4.8	5.9	8.0	1.9	17.6	5.8	4.4	3.6
Vanguard Emerging Markets Stock Index Fund Admiral Shares	842,571	3.0	Jun-2021	-4.0	-	-	-	-4.0	14.1	5.0	4.6	1.9
<i>Vanguard Spliced Emerging Markets Index (Net)</i>				-4.1	-	-	-	-4.1	14.6	4.7	4.3	1.0
TOTAL FIXED INCOME	18,230,837	65.1	Jun-2011	2.1	1.5	1.6	1.1	-1.4	4.2	0.0	0.7	1.6
<i>Blmbg. Global Aggregate Index</i>				0.3	-0.4	-0.5	-1.6	-5.8	0.8	-3.3	-0.7	1.3
Vanguard Total Bond Market Index Adm	3,389,287	12.1	Jul-2016	0.6	-	0.7	-0.2	-3.1	1.4	-1.5	0.1	1.7
<i>Blmbg. U.S. Aggregate Index</i>				0.6	-	0.7	-0.2	-3.1	1.3	-1.6	0.0	1.7
TCW Metropolitan West Total Return Bond	5,273,160	18.8	Nov-2014	1.2	-	0.8	-0.2	-3.8	1.0	-2.0	-0.3	1.9
<i>Blmbg. U.S. Aggregate Index</i>				1.2	-	0.7	-0.2	-3.1	1.3	-1.6	0.0	1.7
Bain Capital High Income Feeder, Ltd.	1,817,174	6.5	Feb-2014	3.8	3.7	3.9	3.8	3.4	15.8	4.3	2.5	1.1
<i>50% BofA ML High Yield/50% S&P LSTA Leveraged Loan Index</i>				4.6	4.4	4.6	4.8	4.0	12.2	2.8	1.9	1.0
Vanguard Short-Term Corp Bd Idx Admiral	2,234,523	8.0	Sep-2013	2.1	2.0	2.0	1.7	0.1	5.1	1.0	1.1	1.1
<i>Blmbg. Barc. 1-5 Year Gov/Credit Index</i>				1.4	1.3	1.3	1.0	-0.5	3.3	0.3	0.6	0.9
Vanguard Inflation-Protected Securities Fund Admiral Shares	1,653,798	5.9	Mar-2020	0.9	-	-	-	-1.4	1.5	0.0	0.8	1.8
<i>Blmbg. U.S. TIPS Index</i>				0.9	-	-	-	-1.4	1.6	-0.1	0.8	1.7
PIMCO Income Fund Institutional Class	2,487,381	8.9	Mar-2020	2.4	-	-	-	1.1	7.9	1.4	1.3	1.8
<i>Blmbg. U.S. Aggregate Index</i>				-1.9	-	-	-	-3.1	1.3	-1.6	0.0	1.7

COMMUNITY FOUNDATION OF GREATER DES MOINES MODERATE GROWTH

Asset Allocation & Performance (net of fees)

As of May 31, 2024



	Allocation		Inception Date	Performance								
	Asset \$	% of Portfolio		Inception	10 Year	7 Year	5 Year	3 Year	1 Year	CYTD	3 Months	1 Month
PIMCO Mortgage Opportunities and Bond Fund <i>Blmbg. U.S. Mortgage Backed Securities</i>	1,375,514	4.9	Aug-2022	3.5	-	-	-	-	6.2	1.8	1.4	1.6
				-2.0	-	-	-	-	0.5	-2.1	0.0	2.0
TOTAL CASH	2,586	0.0	Jun-2011	0.8	0.9	1.1	1.1	1.5	3.0	1.2	0.7	0.3
Money Market Fund <i>90 Day U.S. Treasury Bill Index</i>	2,586	0.0	Jun-2011	0.8	0.9	1.1	1.1	1.5	3.0	1.2	0.7	0.3
				1.1	1.5	2.0	2.1	2.9	5.5	2.2	1.4	0.5

COMMUNITY FOUNDATION OF GREATER DES MOINES MODERATE GROWTH

Historical Hybrid Composition

As of May 31, 2024



	%
<i>May-2022</i>	
MSCI AC World IMI Index (Net)	34.0
Blmbg. Global Aggregate Index	66.0

OBJECTIVES :The current portfolio has a long-term (20-year) expected return of 6.0%. Over a 10-year horizon, the portfolio is expected to return 6.5% The standard deviation of this portfolio is plus/minus 7.9% over any one year and plus/minus 2.5% over the 10-year period. The Sharpe Ratio of this portfolio is 0.34.